



Maule Aircraft Corporation

SPENCE AIR BASE

PHONE (912) 985-2045

MOULTRIE, GEORGIA 31768

July 9, 1971

Page 1 of 3

SERVICE LETTER #23

SUBJECT: FUEL SYSTEM

MODELS EFFECTED: M-4-180 and M-4-220 series aircraft. —

Serial No's

M-4-180 3001C thru 3005C

M-4-220 2001C thru 2070C

For further safety of the M-4-180 and M-4-220 series aircraft. The two items, page 2 and page 3 of this service letter must be complied within 25 hours service.

This service letter is mandatory by Maule Aircraft Corporation and F.A.A. approved.

Materials needed for compliance will be furnished by Maule Aircraft Corporation at no charge upon request.

Sincerely,
MAULE AIRCRAFT CORPORATION

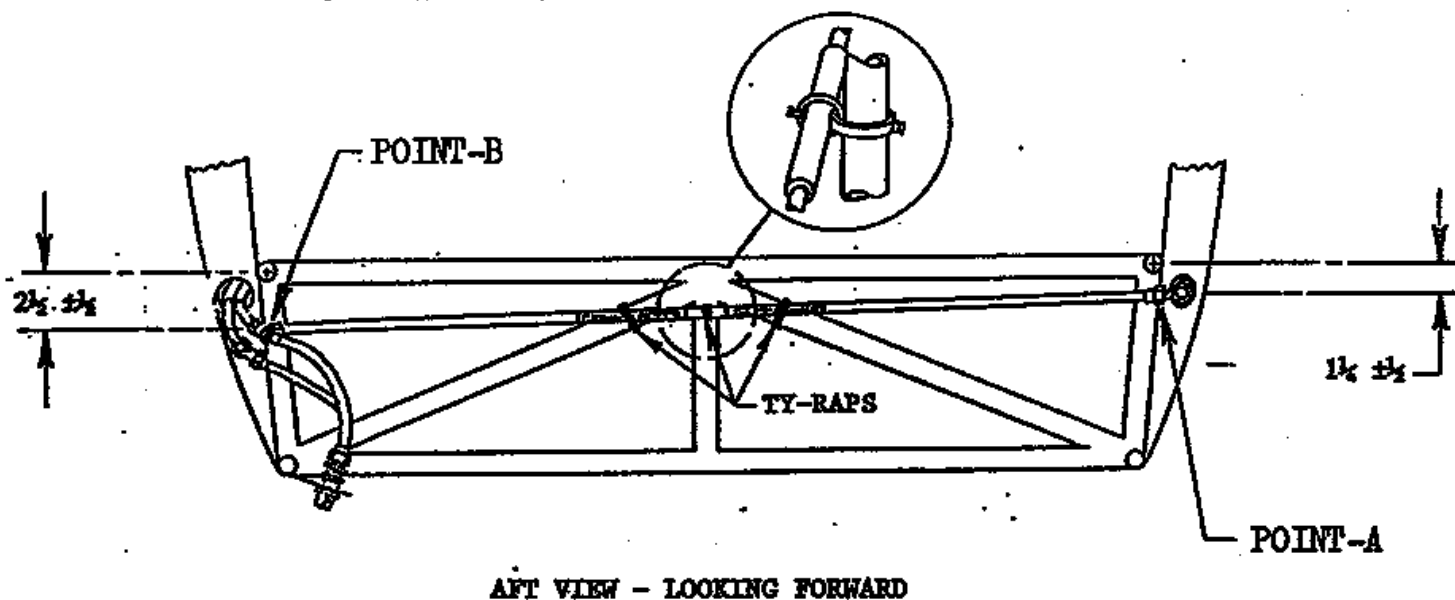


B. D. Maule,
President

BDM/jj

BILL OF MATERIAL:

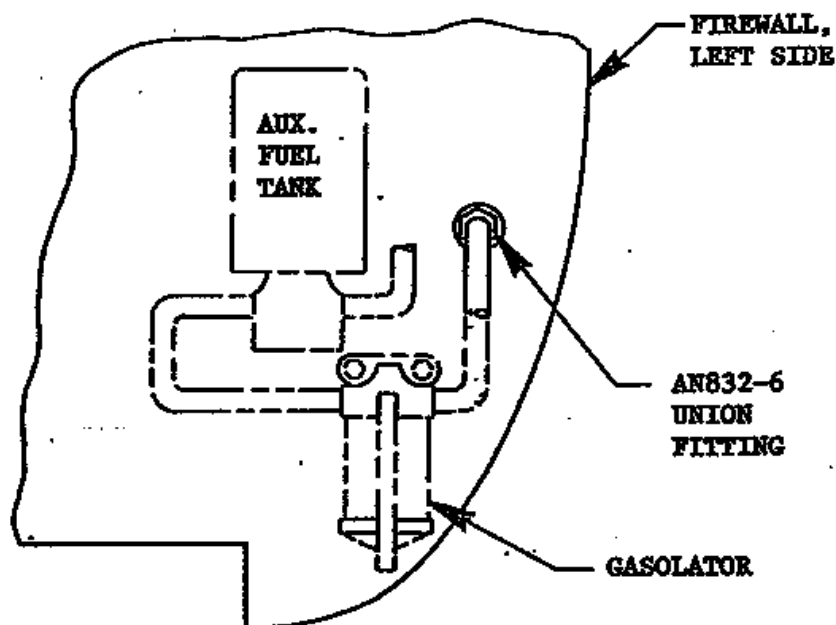
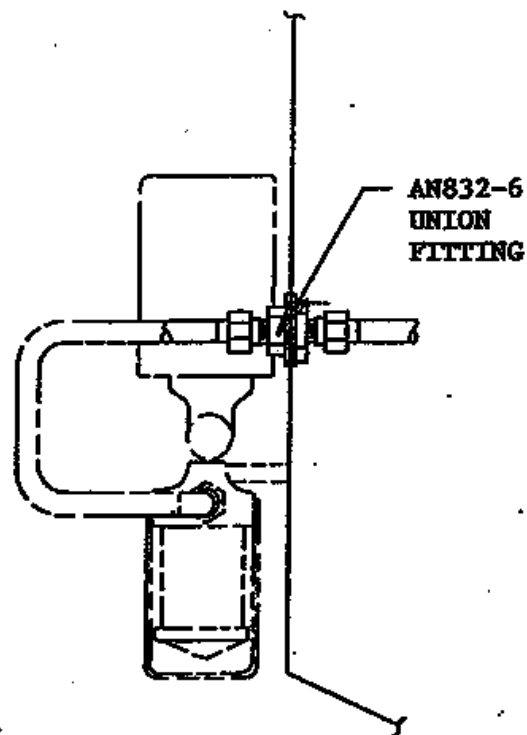
4 ea. TY-25M TY-RAP

INSTRUCTIONS

1. Remove pilot and co-pilot seats.
2. Inspect fuel line from point-A to point-B to assure there is no low areas in fuel line.
3. Point-B must be a minimum of 1/4" lower than point-A when aircraft is in 3 point position.
4. Secure fuel line to fuselage frame as illustrated above.

BILL OF MATERIAL:

1 ea. AN832-6 UNION FITTING

VIEW LOOKING AFTSIDE VIEW

1. Remove engine cowling.
2. Place fuel selector valve in off position.
3. Remove "B" nut on inside of firewall from union fitting.
4. Remove "B" nut on outside of firewall from union fitting.
5. Remove union fitting and replace with AN-832-6 union fitting.

MAULE AEROSPACE TECHNOLOGY, INC.

SERVICE LETTER #23 - COMPLIANCE RECORD

Airplane Serial Number _____

Airplane Registration Number _____

The following action was taken with respect to this Service Letter:



Service Letter #23 completed

Certified by _____

(Signature)

(Printed name)

Title _____

(Owner, A&P, IA, etc.)

Date performed _____

In an effort to keep our mailing list current for sending Service Letters, Service Bulletins, etc., please fill in the following:

Owner's name _____

Owner's address _____

Mail this Compliance Record to: Maule Aerospace Technology, Inc.
Engineering Records
Spence Field
Moultrie, GA 31768